

**Honeywell**  
FIBRE-METAL®



## QuickSwitch™ System

Multiple tasks. One system. No compromises.



## Fibre-Metal® gives you a competitive edge.

Safety. Comfort. Efficiency.  
We deliver all that — and more.

Fibre-Metal® offers an integrated system of personal protective equipment that keeps employees safe on the job. But that's just the beginning of the story. Ultimately, what you gain is a safer, more satisfied — and more competitive — workforce.

Our protective caps, welding helmets and faceshields are engineered and built to offer maximum safety, so they help reduce the costs of injuries, medical treatments, and lost time. They're designed to deliver unmatched comfort and fit, so workers can concentrate better and stay on the job longer. And with our various QuickSwitch™ System options, switching between tasks like welding and grinding is fast and easy — meaning you get the highest possible levels of productivity from your employees.

- **Safety first.** Personal protective equipment reduces injuries and their associated cost.
- **Comfort counts.** Workers will gladly wear comfortable, properly-fitted equipment.
- **Efficiency is built in.** Our exclusive QuickSwitch™ System minimizes downtime between tasks.

**Choose Honeywell, and show your employees that you care about protecting them and helping them work at peak performance.**

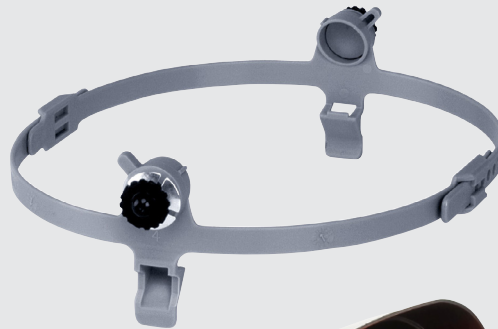
# Switch from grinding to welding in seconds.

Our QuickSwitch™ System is available in three distinct technologies – **Speedy™ Loop**, **Quick-Lok™**, and **Quick-Lok™ Mounting Blades** – so you can choose what will work best for you. All are designed to maximize productivity and minimize downtime.

## Speedy-Loop™

Speedy Mounting Loop is ideal for frequent on/off use of welding helmets, faceshields and goggles in combination with protective caps.

- Protective cap remains on head while mounting – for quick switching between tasks
- No tools or hardware required – adjusts to fit any cap style
- Secure design contains no metal parts



*Speedy-Loop™ system with welding helmet*



Strip-Proof Ratchet, limited warranty for life of hard hat



*Speedy-Loop™ system with faceshield*



To install:

- (1) spread Speedy-Loop™ clips with thumbs as you pull down below bottom of cap, (2) release clips to lock.

## SuperEight® suspension: A Fibre-Metal® exclusive

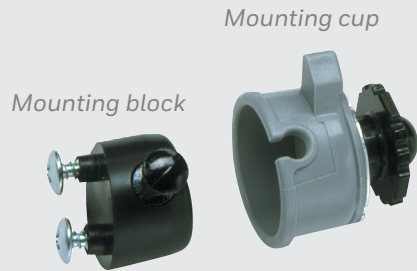
Eight load-bearing points balance and spread weight over a wide area for greater comfort, and control impact energy by breaking it into small increments and distributing it evenly.



## Quick-Lok™

Quick-Lok™ provides a mounting solution for longer-term combination use or high-activity applications.

- Mounting blocks screw onto protective cap
- Mounting cups attach securely to welding masks, faceshields, goggles – without tools
- Switch accessories in seconds – without tools



Quick-Lok™ system with welding helmet



Quick-Lok™ system with faceshield



Quick-Lok™ mounting blocks are available pre-installed on Fibre-Metal® protective caps – so they are ready for work.



Strip-Proof Ratchet, limited warranty for life of hard hat

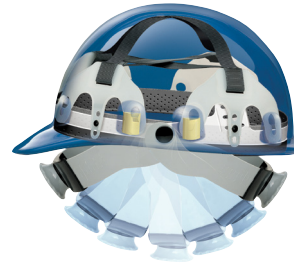


To install:

(1) press button on block, (2) insert block into cup, (3) release button to lock.

**Swingstrap™ reversible ratchet headgear:  
A Fibre-Metal® exclusive**

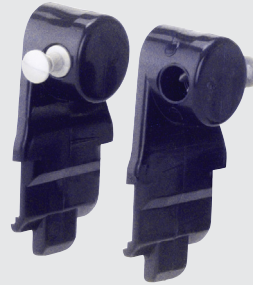
Switch between front-wearing and rear-wearing positions to accommodate welding helmets and faceshields without reversing a cap's suspension or headband.



**Quick-Lok™ Blades**

Quick-Lok™ Mounting Blades adapt most popular brands of slotted caps for use with the Quick-Lok™ mounting system.

- Mounting blades snap securely into slots on cap
- Mounting cups attach securely to welding masks, faceshields, goggles – without tools
- Switch accessories in seconds – without tools



*Quick-Lok™  
Mounting Blades  
with welding helmet*



*Quick-Lok™  
Mounting Blades  
with faceshield*




To install: insert mounting blade firmly in slot until it locks.

# Top-quality protection for virtually every jobsite face hazard.

## Fibre-Metal® High-Performance Faceshield Windows

Our faceshield windows boast the best all around performance characteristics in the industry. They are injection-molded from propionate, then preformed to the exact curve of our crown protectors for easy installation and perfect seal. They are .060" thick for an extra margin of protection, and meet ANSI Z87.1+ standard for eye and face protection and CSA Z94.3.

Wide Vision Item #	Extended View Item #
 <p>4178IR/UV3 4178IR/UV5 4178IR/UV8 4178DGN 4178TVGY S178</p>	 <p>4199IR/UV3 4199IR/UV5 4199IR/UV8 4199DGN</p> <p>4199GDTVGY</p>

Color	Application
Clear	for grinding, cutting and various chemicals
Dark Green	protects against glare
IRUV 3 or 5	protects against IR/UV for oxy-fuel welding and cutting
IRUV Shade 8	protects against IR/UV for plasma cutting
True View™ Grey	protects against glare for outdoor work
True View Gold Plated	protects against heat (gold plating deflects heat, keeps workers cool)
Mesh Screen	protects against heat (mesh screen deflects heat, keeps workers cool)

## Thermoplastic Welding Helmets

### Tigerhood™ Classic

Features a unique airflow design to provide extended throat protection, blocks fumes and smoke from the face, yet allows air to circulate. Molded from Noryl, they maintain their high performance level across a wide range of conditions.



### Tigerhood™ Futura™

Features lightweight design for all-day comfort, yet is durable for extended service life. Molded from a high performance material for a higher melting point and better dimensional stability at elevated temperature.



## Peak-Mounted Faceshield with Brackets

Item #	
E2RW Cap	
FM70 Bracket	
4178TVGY Window	
P2HNV Cap	
FH66 Bracket	
4178IR/UV5	
E1RW Full Brim Hat	
FM71 Bracket	
4178CL Window	

### For more information :

[www.honeywellsafety.com](http://www.honeywellsafety.com)

### Honeywell Industrial Safety

900 Douglas Pike  
Smithfield, RI 02917-1874  
(800) 430-5490  
[www.honeywell.com](http://www.honeywell.com)

FMFL10QSEN0000 | 06/17  
© 2017 Honeywell International Inc.

**Honeywell**  
FIBRE-METAL®